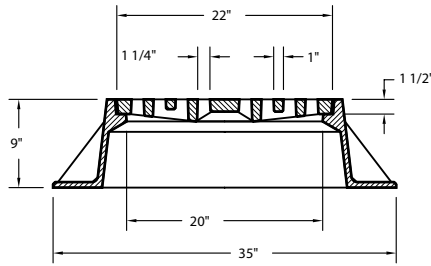


■ Note: When specifying/ordering grates, refer to "Choosing the Proper Inlet Grate" on pages 125-126.  
 For a complete listing of FREE OPEN AREAS and WEIR PERIMETERS of all NEENAH grates, refer to pages 327-332.

**R-2533**  
**Inlet Frame, Grate**

**Heavy Duty**

CATALOG NUMBER	GRATE TYPE	SQ. FT. OPEN	WEIR PERIMETER LINEAL FEET
R-2533	A	1.1	5.8
R-2533	C	1.0	5.8
R-2533	B	1.2	5.8



Non-Rocking feature available, see p. 12.

Standard Grate (shown): Type A  
 Alternate Grate(s):

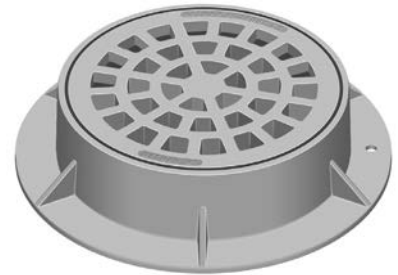
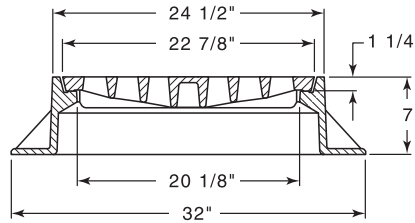


Available Lid: **R-1710**

**R-2534**  
**Inlet Frame, Grate**

**Heavy Duty**

CATALOG NUMBER	GRATE TYPE	SQ. FT. OPEN	WEIR PERIMETER LINEAL FEET
R-2534	C	0.9	6.0

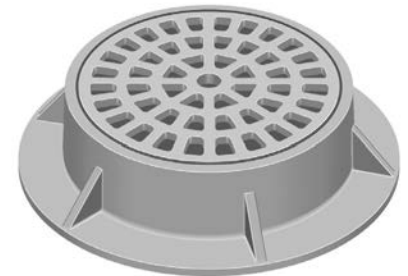
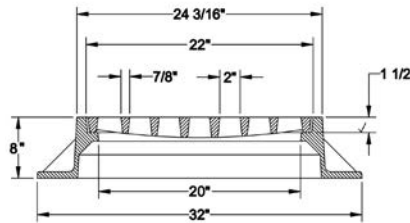


Available Lid: **R-1570-A**

**R-2535**  
**Inlet Frame, Grate**

**Heavy Duty**

CATALOG NUMBER	GRATE TYPE	SQ. FT. OPEN	WEIR PERIMETER LINEAL FEET
R-2535	C	1.1	5.8
R-2535-A	C	1.1	5.8



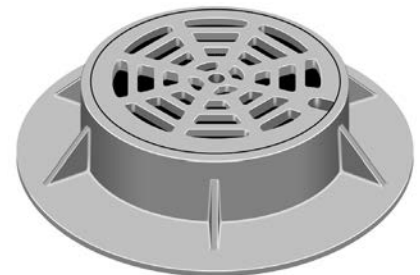
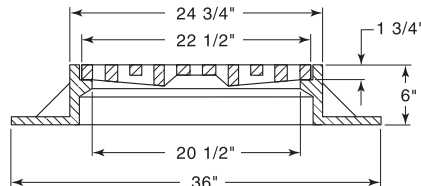
Available with 4" high frame, order as **R-2535-A**.  
 Also available with 38" diameter frame flange.

Available Lid: **R-1510-A**

**R-2540**  
**Inlet Frame, Grate**

**Heavy Duty**

CATALOG NUMBER	GRATE TYPE	SQ. FT. OPEN	WEIR PERIMETER LINEAL FEET
R-2540	D	1.1	5.9
R-2540-A	D	1.1	5.9



Available with 38" diameter frame, order as **R-2540-A**.

Available Lid: **R-1580**

Supplied By:  
**TRENCHDRAIN SUPPLY** 877-903-7246  
[www.trenchdrainsupply.com](http://www.trenchdrainsupply.com)

[CLICK HERE](#) to return to the Table of Contents

